

<b>Debut III</b>	Ortofon OM5e			64.900Ft



Chassis **matt black**. 8,6-inch-tonearm mounted MM-cartridge Ortofon OM 5E, incl. lid.  
Speeds: 33+45 RPM Speeds: 33+45 RPM manually or electronically with Speed Box electronically  
Speed 78 rpm: with optional special-pulley (PULLEY-SB) and Speed Box.  
Extra Ortofon stylus for Schellack-records at extra charge.  
Dimensions: W x H x D: lid closed 415 x 118 x 320mm, lid open: 415 x 365 x 405mm.

<b>Debut III colours</b>	Ortofon OM5e			69.900Ft



**Same as above**, Chassis high-glossy **RED, PIANO, WHITE, YELLOW, BLUE, GREEN and SILVER.**



<b>Debut III Phono</b>	Ortofon OM5e			83.900Ft

Chassis matt **BLACK or SILVER**. All features of Pro-Ject Debut III.  
Difference: integrated phono-preamp (MM only).

<b>Debut III Phono USB</b>	Ortofon OM5e			97.900FT

Chassis matt **BLACK or SILVER, WHITE and high-gloss PIANO**.  
All features of Pro-Ject Debut III.  
Difference: Integrated phono-preamp (MM only) with DAC and USB-OUT to record analogue source to computer.

<b>Debut III Phono SB</b>	Ortofon OM5e			97.900Ft

Chassis matt **BLACK or SILVER**. All features of Pro-Ject Debut III.  
Difference: Integrated phono-preamp (MM only) and electronic speed-change 33/45 rpm, manual also 78 rpm.

<b>Debut III E</b>	Ortofon OM5e			92.000Ft

Chassis matt **BLACK or SILVER**. All features of Pro-Ject Debut III.  
Difference: Including opto-electronic cut-off. 78 rpm and connection Speed Box II not possible.

<b>Debut III Esprit</b>	Ortofon Alpha			105.000Ft
-------------------------	---------------	--	--	-----------



All features of Pro-Ject Debut III.  
 Difference: Acrylic main-platter, MM-cartridge Ortofon Alpha.  
 Chassis available in high-gloss **BLUE, PIANO, WHITE, RED, YELLOW, GREEN and SILVER.**



<b>1 Xpression III</b>				126.000Ft
------------------------	--	--	--	-----------



**EXCLUDING CARTRIDGE**  
 Chassis high-gloss anthrazit-grey, with acrylic main-platter, incl. lid.  
 8,6-inch carbon-fibre-tonearm and RCA-terminals.  
 Speeds: 33+45 RPM manual or with Speed Box II electronically  
 Speed 78 RPM with optional special-pulley (PULLEY-SB) and Speed Box II manual.  
 Dimensions W x H x D: lid closed 415 x 118 x 320mm, lid open 415 x 365 x 405mm.

<b>1 Xpression III</b>	Ortofon 2M Red			139.000Ft
------------------------	----------------	--	--	-----------

**Same as above,**  
**INCLUDING MM-cartridge ORTOFON 2M Red**

<b>1 Xpression III Comfort</b>	Ortofon 2M Red			167.000Ft
--------------------------------	----------------	--	--	-----------



All features of Pro-Ject 1 Xpression III  
**INCLUDING MM-cartridge ORTOFON 2M-Red**  
 Difference: Electronic speed-change 33/45 RPM,  
 manual speed-change also to 78RPM

<b>1 Xpression III Classic</b>				182.000Ft
--------------------------------	--	--	--	-----------

All features of Pro-Ject 1 Xpression III  
**EXCLUDING CARTRIDGE !!!**  
 Difference: main-platter out of aluminium  
 available in PIANO-BLACK, MAHOGANY and OLIVE

<b>1 Xpression III Classic</b>	Ortofon 2M-Red			196.000Ft
--------------------------------	----------------	--	--	-----------

All features of Pro-Ject 1 Xpression III Classic  
**INCLUDING MM-cartridge ORTOFON 2M-Red**

<b>2 Xperience Acryl</b>				252.000Ft
--------------------------	--	--	--	-----------



Transparent acrylic-chassis on Sorbothane® damped aluminium feets. incl. lid.  
 9-inch Carbon-fibre-tonearm Pro-Ject 9cc with RCA-terminals.  
 Speeds: 33+45 RPM manual or with Speed Box II electronically  
 78 RPM not possible.  
 Dimensions W x H x D: lid closed 460 x 133 x 360mm, lid open 460 x 390 x 460mm.

<b>2 Xperience Acryl</b>	ORTOFON 2M-Red			265.000Ft

Same as above,  
INCLUDING MM-cartridge ORTOFON 2M Red

<b>2 Xperience Acryl SuperPack 1</b>	Ortofon Rondo Red			308.000Ft

Same as above. SuperPack with mounted Low-Output MC Ortofon MC Rondo Red.  
Electronically speed-change 33+45 RPM with packed Speed Box,  
78 RPM not possible.

<b>2 Xperience Acryl SuperPack 2</b>	Ortofon Salsa			279.000Ft

Same as above. SuperPack with mounted Low-Output MC Ortofon MC Salsa.  
Electronically speed-change 33+45 RPM with packed Speed Box,  
78 RPM not possible.

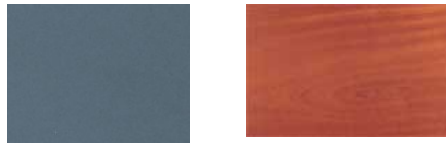
<b>2 Xperience Classic</b>				252.000Ft

Similar as above with thicker wooden chassis.  
Chassis veneered in **OLIVE**, **MAHOGANY** (high gloss) or **PIANO-BLACK** on Sorbothane®  
damped aluminium feet. Incl. lid.



9-inch carbon-fibre-tonearm Pro-Ject 9cc with RCA-terminals.  
Speeds: 33+45 RPM manual or with Speed Box II electronically  
78 RPM not possible.

Dimensions W x H x D: lid closed 460 x 133 x 360mm, lid open 460 x 390 x 460mm



OLIVE

PIANO BLACK

MAHOGANY

<b>2 Xperience Classic</b>	ORTOFON 2M-Red			265.000Ft

Same as above,  
INCLUDING MM-cartridge ORTOFON 2M Red

<b>6 perspeX</b>				392.000Ft



Transparent acrylic-chassis on Sorbothane® damped aluminium feet. Incl. lid. Magnet  
supported subchassis out of Corian. 9-inch Carbon-fibre-tonearm Pro-Ject 9cc Evolution with  
RCA-terminals. Inverted platter-bearing with ceramic-ball.

Speeds 33+45 RPM manual or with Speed Box II electronically  
78 RPM not possible

Dimensions W x H x D: lid closed 460 x 160 x 365mm, lid open 460 x 420 x 465mm.

<b>6 perspeX SuperPack</b>				559.000Ft

Same as above with mounted Low-Output MC-cartridge Ortofon MC Valencia and  
Pro-Ject phono-cable Connect it Phono C 1,23m

<b>X tension Classic / 12cc Evo</b>			1.117.000Ft
-------------------------------------	--	--	-------------



Chassis on magnet supported feets, veneer-options: **OIIVE** and **MAHOGANY** (high-gloss), or **PIANOBLACK**.

12-inch Carbon-fibre-tonearm Pro-Ject 12cc Evolution with RC-terminals. Sorbothane® damped aluminium-platter with magnet supported, inverted platter-bearing with ceramic ball. Incl. lid.

Electronic speed-change 33+ 45 RPM through integrated Speed Box SE.

Speed 78 RPM manual.

Dimensions W x H x D: lid closed 550 x 250 x 450mm, lid open 550 x 550 x 560mm.

#### Olive

<b>X tension Classic / RS-309D</b>			1.484.000Ft
------------------------------------	--	--	-------------



**Same as above** with 12-inch-tonearm Ortofon RS-309D (dynamic balanced) and Ortofon headshell SH-4

#### Piano

<b>X tension Classic / AS-309S</b>			1.344.000ft
------------------------------------	--	--	-------------



**Same as above** with 12-inch-tonearm Ortofon AS-309S (symmetric balanced)

#### Mahogany

<b>RPM 1.3 „Genie“</b>	Ortofon OM3e		74.900Ft
------------------------	--------------	--	----------



Chassis matt black. 8,6-inch-tonearm with mounted MM-cartridge Ortofon OM3e.

Speeds 33+45 RPM manual or with Speed Box II electronically,

Speed 78 RPM with optional special-pulley (PULLEY SB) and Speed Box II manual.

Optional lid Cover it 2 on extra cost.

Dimensions W x H x D: 380 x 115 x 350mm.

<b>RPM 1.3 „Genie“ colours</b>	Ortofon 2M-Red		89.900Ft
--------------------------------	----------------	--	----------



All features of Pro-Ject RPM 1 Genie3.

INCLUDING MM-cartridge Ortofon 2M-Red

AVAILABLE in **RED, WHITE** and **PIANO**

<b>RPM 5.1</b>				167.000ft
----------------	--	--	--	-----------



EXCLUDING CARTRIDGE

Chassis pianoblack anthrazit-grey. **NEW:** Incl. 9cc Carbon-fibre-tonearm  
 Speeds 33+45 RPM manual or with Speed Box II electronically,  
 Speed 78 RPM with optional special-pulley (PULLEY SB) and Speed Box II manual.  
 Optional lid Cover it 2 on extra cost.  
 Dimensions W x H x D: 525 x 290 x 425mm.

<b>RPM 5.1</b>	Ortofon 2M Red			182.000Ft
----------------	----------------	--	--	-----------

**Same as above.**  
 INCLUDING MM-cartridge Ortofon 2M Red

<b>RPM 5.1</b>	Ortofon Salsa			229.000Ft
----------------	---------------	--	--	-----------

**Same as above.**  
 INCLUDING MC-cartridge Ortofon Salsa

<b>RPM 5.1 SuperPack</b>	Pro-Ject MC-1H			224.000Ft
--------------------------	----------------	--	--	-----------

**Same as above.**  
 INCLUDING MC-cartridge Pro-Ject MC-1H, main-platter including vinyl-platter on top.  
 Speed Box mounted

<b>RPM 6.1SB</b>				224.000Ft
------------------	--	--	--	-----------



Platter silver-grey lacquered. Chassis on Sorbothane® damped aluminium feets.  
 9-inch carbon-fibre-tonearm Pro-Ject 9c with RCA-terminal. Inverted platter-bearing with ceramic ball.  
 Electronic speed-change 33/45 RPM, manual 78 RPM possible.  
 Optional lid Cover it 1 on extra cost.  
 Dimensions W x H x D: 525 x 290 x 425mm.

<b>RPM 6.1SB SuperPack</b>				252.000Ft
----------------------------	--	--	--	-----------

**Same as above** as SuperPack with mounted Low-Output MC Ortofon MC Samba and record-brush Pro-Ject Brush it.

<b>RPM 9.1</b>				308.000Ft
----------------	--	--	--	-----------



Anthrazit-grey laquered chassis with granulat.filling on Sorbothane® damped aluminium feets.  
 9-inch carbon-fibre-tonearm Pro-Ject 9cc with RCA-terminal. Acrylic main-platter, inverted platter-bearing with ceramic ball.  
 Speeds 33+45 RPM manual or with Speed Box electronically,  
 78 RPM not possible. Optional lid Cover it 1 on extra cost.  
 Dimensions W x H x D: 440 x 180 x 325mm.

<b>RPM 9.1 SuperPack 1</b>				448.000Ft
----------------------------	--	--	--	-----------

All features of Pro-Ject RPM 9.1.  
 Difference: Ortofon Rondo Red MC cartridge mounted. Speed Box SE included.

<b>RPM 9.1 SuperPack 2</b>				448.000Ft
----------------------------	--	--	--	-----------

All features of Pro-Ject RPM 9.1.  
 Difference: Sumiko Blue Point II MC cartridge mounted. Speed Box SE included.

<b>RPM 9.1 SuperPack 3</b>			392.000Ft

All features of Pro-Ject RPM 9.1.  
 Difference: Ortofon Rondo Red MC cartridge mounted.

<b>RPM 9.1 Acryl</b>			392.000Ft



All features of Pro-Ject RPM 9.1.  
 Difference: Transparent acrylic-chassis without granulat-filling

<b>RPM 9.2 Evolution</b>			448.000Ft



Anthrazit-grey laquered chassis with granulat filling on adjustable magnetic feets. 9-inch carbon-fibre-tonearm Pro-Ject 9cc Evolution with RCA-terminal. Acrylic main-platter, inverted platter-bearing with ceramic ball.  
 Speeds 33+45 RPM manual or with Speed Box electronically, 78 RPM not possible. Optional lid Cover it 1 on extra cost.  
 Dimensions W x H x D: 440 x 180 x 325mm.

<b>RPM 10.1 Evolution</b>			697.000Ft



Anthrazit-grey laquered chassis with granulat-filling on Sorbothane® damped aluminium feets. Including turntable-base Ground it deluxe 3 with adjustable magnetic feets.  
 10-inch carbon-fibre-tonearm Pro-Ject 10cc Evolution with RCA-terminal. Acrylic main-platter, magnet supported, inverted platter-bearing with ceramic balls.  
 Speeds 33+45 RPM manual or with Speed Box electronically, 78 RPM not possible. Optional lid Cover it 1 on extra cost.  
 Dimensions W x H x D: 480 x 210 x 330mm (incl. motor).  
 Dimensions Ground it deluxe 3 W x H x D: 500 x 80 x 400mm.